



8.4 - PERCHAS Y APOYOS PARA SUELO



PERCHA

Para pegar con UVA

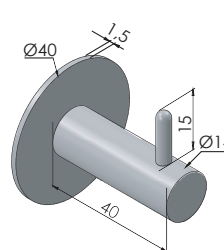
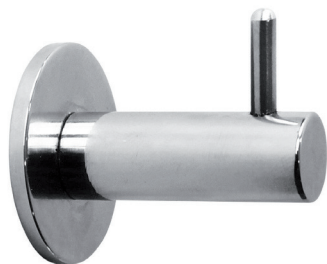
Acabados:

Inox brillo	1090 IB
Inox mate	1090 IM

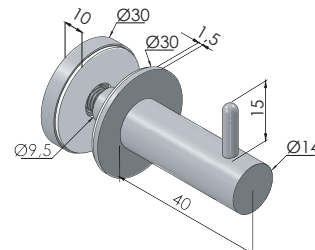
Para vidrio 8/10 mm,
taladro Ø 12 mm

Acabados:

Inox brillo	1091 IB
Inox mate	1091 IM



Ref. 1090



Ref. 1091

3090
3091

PERCHA Q

Para pegar con UVA

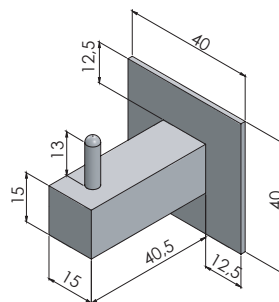
Acabados:

Inox brillo	1098 IB
Inox mate	1098 IM

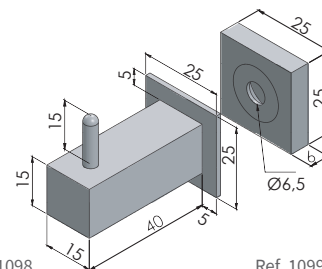
Para vidrio 8/10 mm,
taladro Ø 12 mm

Acabados:

Inox brillo	1099 IB
Inox mate	1099 IM



Ref. 1098



Ref. 1099

3092
3093